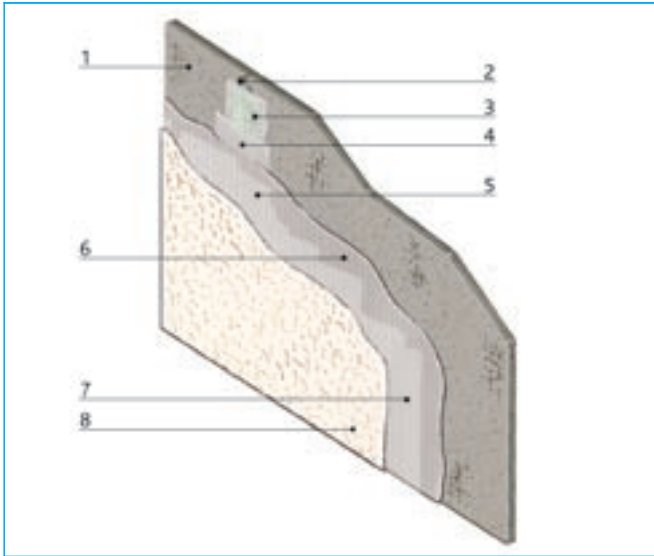


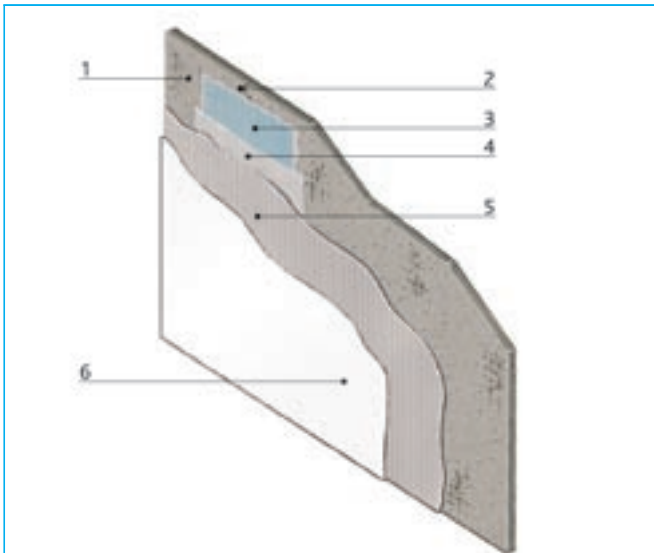
Coating



Exterior system with textured finish

- 1 AQUAPANEL® Cement Board Outdoor
- 2 AQUAPANEL® Maxi Screw / AQUAPANEL® Rustproofed Screw
- 3 AQUAPANEL® Tape (10 cm)
- 4 AQUAPANEL® Joint Filler – grey
- 5 AQUAPANEL® Exterior Basecoat
- 6 AQUAPANEL® Exterior Reinforcing Mesh
- 7 AQUAPANEL® Exterior Primer
- 8 AQUAPANEL® Exterior Silicon Synthetic Resin Plaster – white or AQUAPANEL® Exterior Dispersion Plaster – white

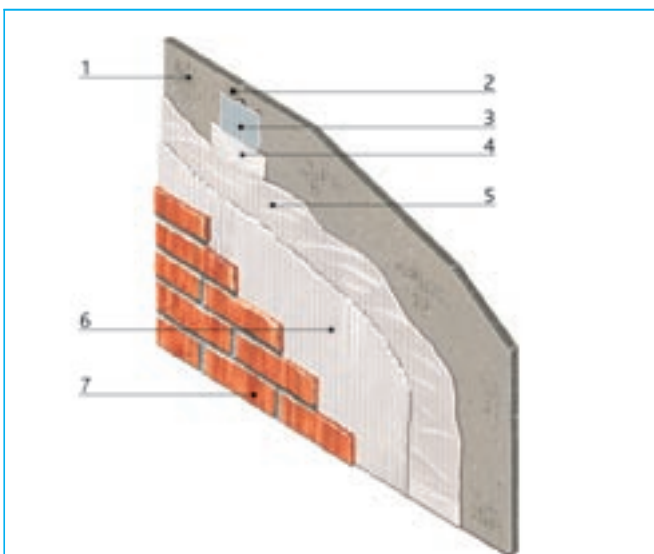
AQUAPANEL® Exterior Silicon Synthetic Resin Plaster – white or AQUAPANEL® Exterior Dispersion Plaster – white can be supplied by the factory in various colours (colour reference value of H \geq 40%).



Exterior system with paint finish

- 1 AQUAPANEL® Cement Board Outdoor
- 2 AQUAPANEL® Maxi Screw / AQUAPANEL® Rustproofed Screw
- 3 AQUAPANEL® Exterior Reinforcing Tape (33 cm)
- 4 AQUAPANEL® Joint Filler – grey
- 5 AQUAPANEL® Exterior Basecoat with AQUAPANEL® Exterior Reinforcing Mesh embedded
- 6 Paint system

Note: For information on colour systems, refer to recommendations and regulations of the manufacturer. For the exact shade, select a colour reference value of H \geq 40%.



Exterior system with thin brick finish or ceramic covering

- 1 AQUAPANEL® Cement Board Outdoor
- 2 AQUAPANEL® Maxi Screw / AQUAPANEL® Rustproofed Screw
- 3 AQUAPANEL® Tape (10 cm)
- 4 AQUAPANEL® Joint Filler – grey
- 5 AQUAPANEL® Exterior Basecoat with AQUAPANEL® Exterior Reinforcing Mesh embedded
- 6 Flexible adhesive
- 7 Thin brick or ceramic covering

Glue the brick or ceramic covering in frost-free conditions using a frost-proof process. Select suitable adhesives according to manufacturers' recommendations for cement bases.

Note: For thin brick application, the maximum permitted load of tiling including adhesive is 40 kg per square metre. The max. dimension is limited by 33 to 33 [cm]. Contact Knauf USG Systems if the load or dimension is higher.