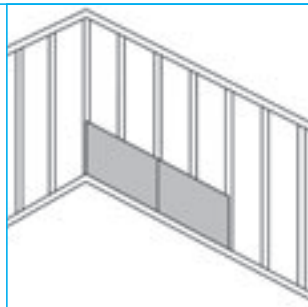
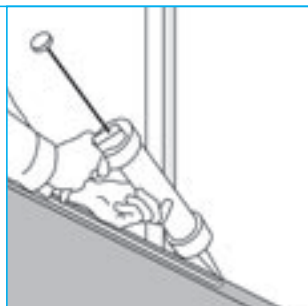


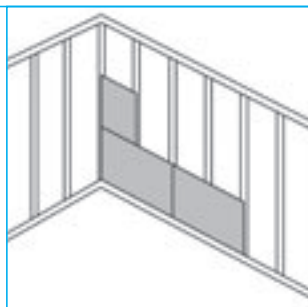
**4.2** Insert the AQUAPANEL® Cement Board Indoor into the bed of adhesive. Screw panel to the framework. Joint reinforcement of the AQUAPANEL® Cement Board Indoor panel is achieved by means of the adhesion technique. There is no need for the time-consuming process of filling and inserting joint tape.



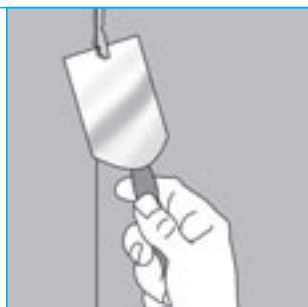
**4.3** The AQUAPANEL® Joint Adhesive (PU) must be applied as a continuous bead along the edges of the boards. Before applying the adhesive, ensure that the edges are cleaned using, for example, a wet brush. It takes approximately 50ml/m<sup>2</sup> (25ml/m). The tube contains enough adhesive for approximately 6m<sup>2</sup>.



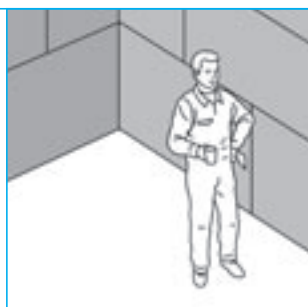
**5. Place next board**  
Install the next AQUAPANEL® Cement Board Indoor panel and ensure that the boards are correctly aligned horizontally and vertically. Screw panel to the framework.



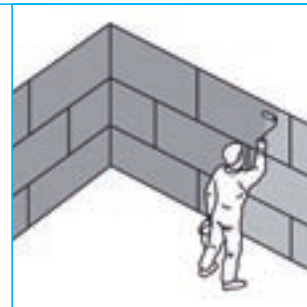
**6. Scraping off**  
Leave the adhesive to harden after which the excess AQUAPANEL® Joint Adhesive (PU) can be scraped off (usually the next day).



**7. Completed wall**  
The joints between the walls, ceiling and floor require permanent elastic sealing in dry areas. Expansion joints should be at a minimum of 7.5 (7.2) m intervals.



**8. Priming**  
AQUAPANEL® Cement Board Indoor must be primed before tiling or finishing using AQUAPANEL® Interior Primer.



## Curved walls

For applications such as arches AQUAPANEL® Cement Board Indoor can be curved.

Using metal shears, cut the UW-profile.

Fit the UW-profile to the desired radius.

Crimp the CW-profile to the perforated UW-profile.

Before installation, bend the cement board panel. The fine cracks that occur on the board surface will not cause any loss of performance.

Board size:  
1200/2400/1250/2500 x 900 mm  
Minimum bending radius  $\geq 3$  m

Strip size:  
1200/2400/1250/2500 x 300 mm  
Minimum bending radius  $\geq 1$  m

Max. stud spacing:  
 $\leq 300/312.5$  mm (external radius)

