

Directly fastened wall linings

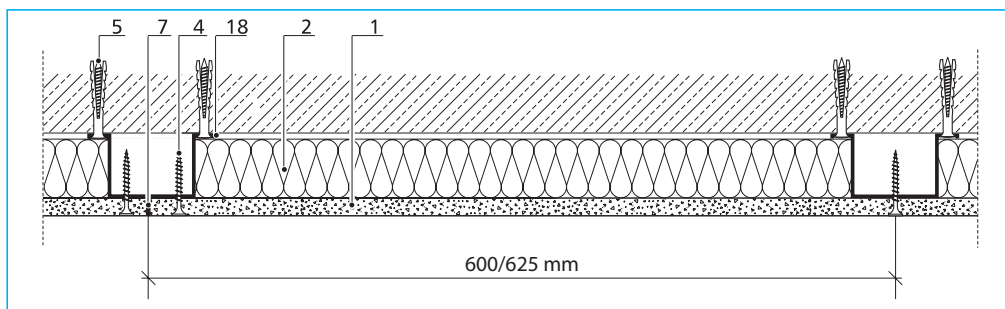
To improve the heat insulation or sound insulation

Special notes

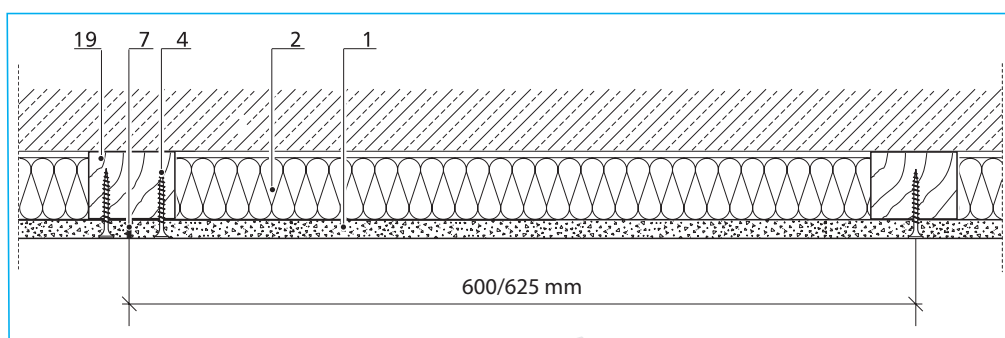
With continuous directly fastened wall linings there is no limitation in construction height.

To improve sound insulation, the fastening points must be spaced as widely as possible (maximum 625mm). The preferred option is an acoustically-engineered "weak" fastening using sprung tracks or an acoustical mounting.

Before improving the heat insulation with a wall lining, it is advisable to calculate the dew point and align construction to this, paying particular attention to the arrangement of the vapour retarder.



Mounting on alignable acoustical mounting, hat profiles or direct hangers

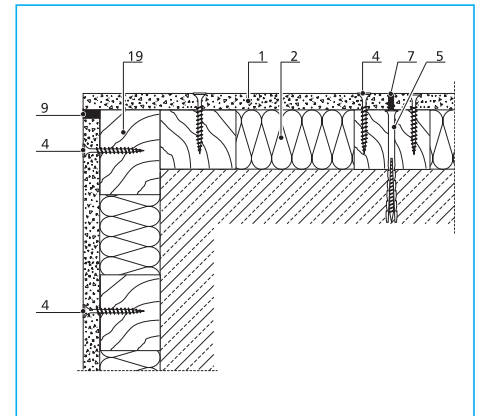


Attachment to timber frame

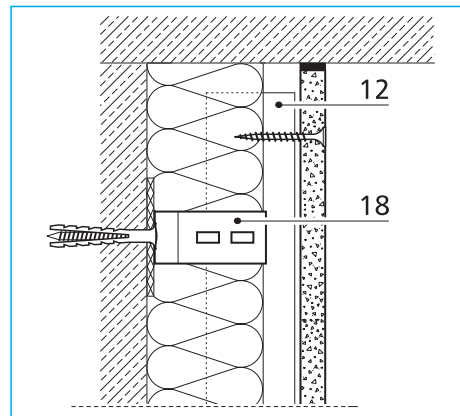
Ideal as wall covering or improvement

Description of material

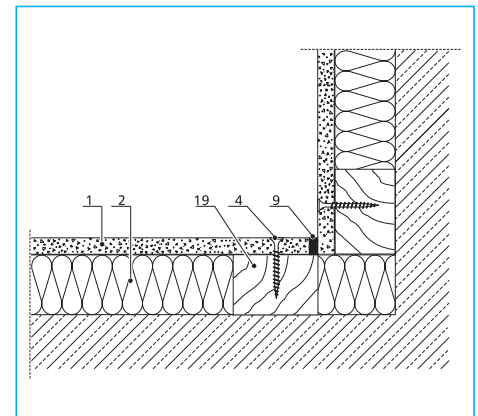
- 1 AQUAPANEL® Cement Board Indoor
- 2 Insulation material
- 4 AQUAPANEL® Maxi Screw
- 5 Approved fixing method
- 7 Glued joint with AQUAPANEL® Joint Adhesive (PU)
- 9 Permanently flexible sealant
- 12 UW-profile
- 18 Alignable acoustical mounting, Hat profile e.g. Knauf 98/15/06 or direct hanger
- 19 Wooden batten
b = ≥ 50 mm



Outer corner



Facing with directly attached UW-profile



Inner corner

Material requirements per square metre of wall

Material requirements for directly fastened wall linings, without off-cut and loss

Material	
AQUAPANEL® Cement Board Indoor	1 m ²
AQUAPANEL® Maxi Screws	15 pieces
AQUAPANEL® Joint Adhesive (PU)	50 ml
AQUAPANEL® Interior Primer	approx. 50 g
Insulation material	0.90 m ²
Permanently flexible sealant	