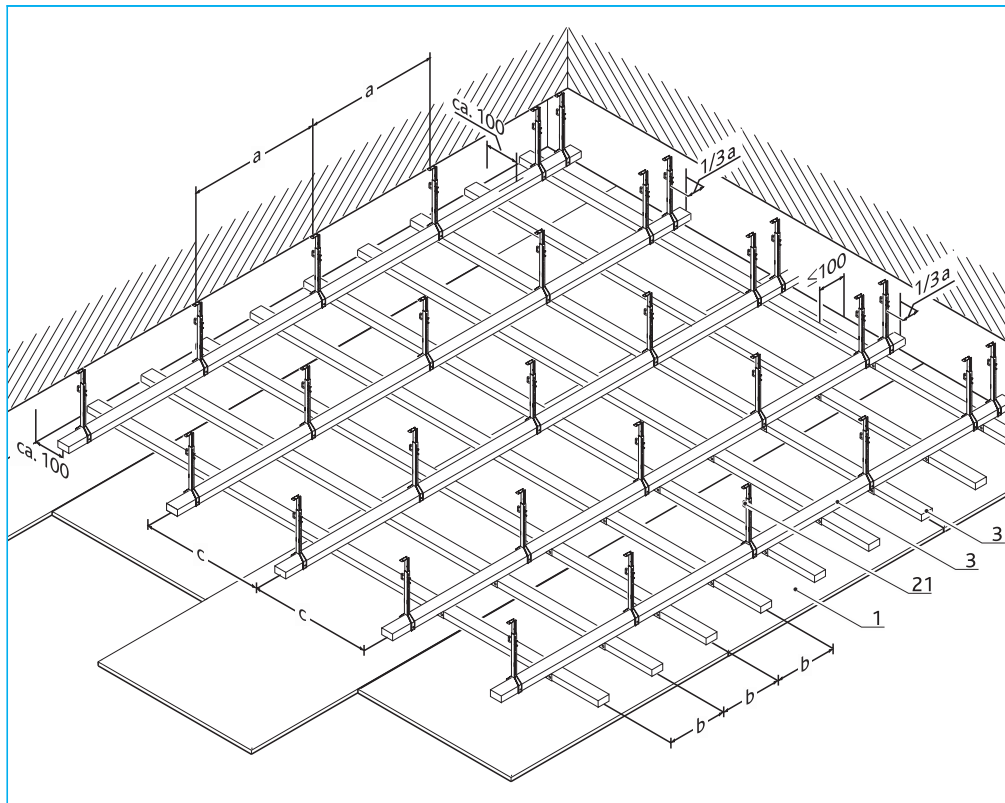


Exterior ceilings and soffits

Exterior ceilings – timber framework

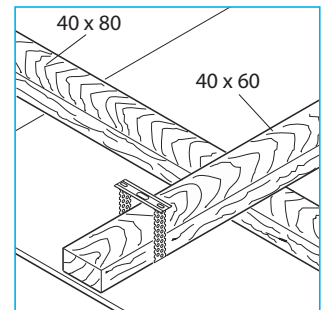


Abbreviations

- a Spacing of the direct ceiling hangers (mm)
- b Spacing of the foundation battens 40/80 (mm)
- c Spacing of the supporting laths 40/60 (mm)

Key

- 1 AQUAPANEL® Cement Board Outdoor
- 3 Battens and laths
- 21 Vernier gauge hanger with securing brackets or direct suspension hangers



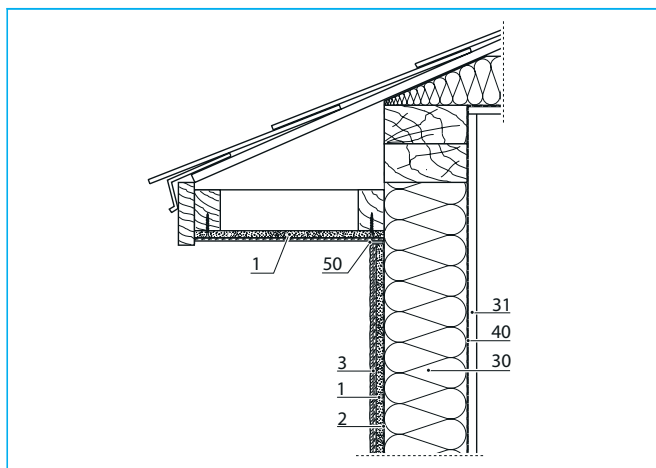
Suspension using Nonius hangers

Direct securing with only one batten

Distance between laths and battens and suspension points

Layer option	Ceiling weight	Hangers	Distance (mm)		
AQUAPANEL® Cement Board Outdoor (1 x 12.5 mm)	ca. 20 kg/m ²	0.4 kN	a: 600	b: 312.5 (300)	c: 600
Direct application with one lath					
AQUAPANEL® Cement Board Outdoor (1 x 12.5 mm)	20 kg/m ²	0.4 kN		b: 312.5 (300)	c: 600

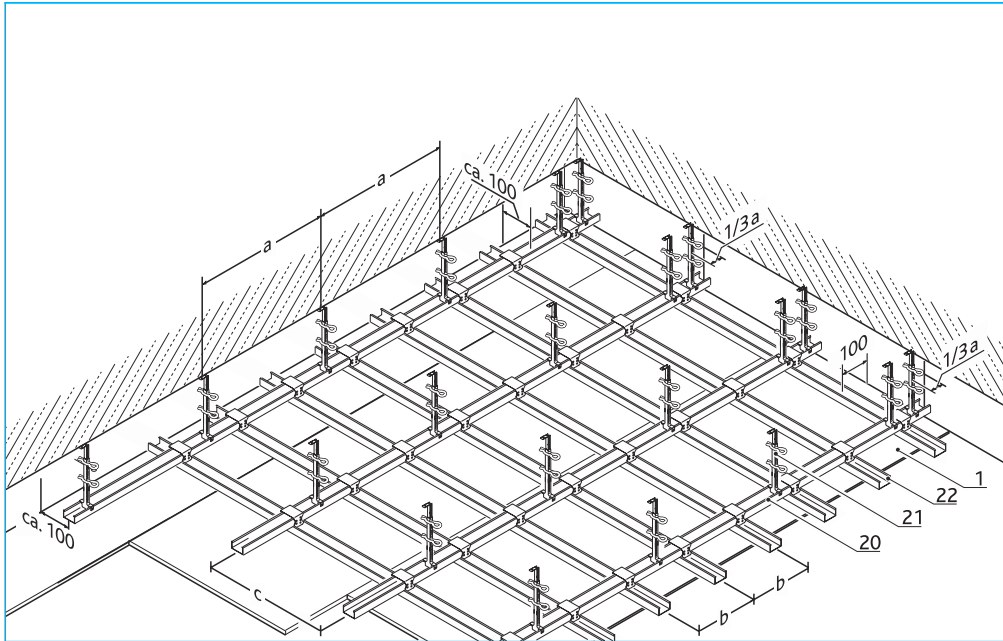
Exterior soffits



Key

- 1 AQUAPANEL® Cement Board Outdoor
- 2 AQUAPANEL® Tyvek® StuccoWrap™
- 3 AQUAPANEL® plaster system
- 30 Insulating material, e.g. Knauf Insulation or Heraklith
- 31 Interior panelling, e.g. Knauf GKB, 12.5 mm
- 40 Vapour barrier / airtight layer
- 50 Elastic sealant

Exterior ceilings – metal framework



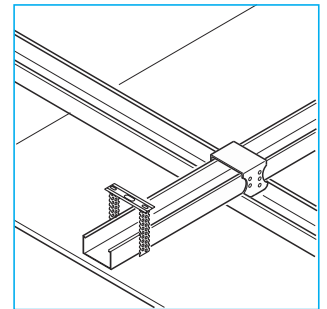
Suspension using Nonius hangers

Abbreviations

- a Spacing of the vernier gauge or direct ceiling hangers (mm)
- b Spacing (mm) of the supporting sections (C ceiling section 60/27/0.6)
- c Spacing (mm) of the base sections

Description of the material

- 1 AQUAPANEL® Cement Board Outdoor
- 20 Base C ceiling section
- 21 Vernier gauge hanger with securing brackets or direct ceiling hanger
- 22 Supporting C ceiling section



Alternative suspension using direct hanger

Distance between laths and battens and suspension points

Layer option	Ceiling Weight	Hangers	Distance (mm)
1) AQUAPANEL® Cement Board Outdoor (1 x 12.5 mm)	ca. 20 kg/m ²	0.4 kN	a: 750 b: 312.5 (300) c:1000

Fire grading period during fire load from the underneath

Layer	Mineral wool (A1, Melting point >1000°C)		Fire resistance class	
	Thickness (mm)	Minimum Gross density (kg/m ³)	Test certificate	
1) 1 x 12.5 mm AQUAPANEL® Cement Board Outdoor + 1 x 12.5 mm GKF	-	-	F 30-A	3461/7923-Mer
2) 2 x 12.5 mm AQUAPANEL® Cement Board Outdoor	2 x 40	50	EI30	c. Pr-02-02.092

■ Note: For joint treatment/finishing/plastering, please follow the recommendations and regulations for ceiling systems given on page 19.

Special Notes

The ceiling systems with the system dimensions and section values shown here are only valid for the installation up to a height of 8.0 m over the upper edge of the ground. For installation at heights greater than 8.0 m over the upper edge of the ground, select reduced system gaps or other section values. To do this, a proof of stability is required. The notes of reports and certificates have to be considered for ceilings with fire protection requirements.

Exterior systems