

# Independent wall linings/shaft walls

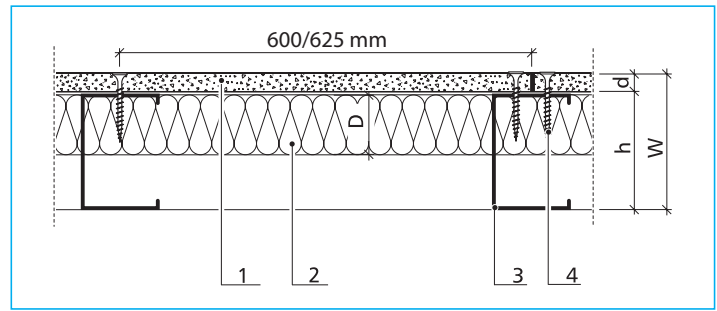
## Fire resistance duration: EI30 from both sides

### Abkürzungen

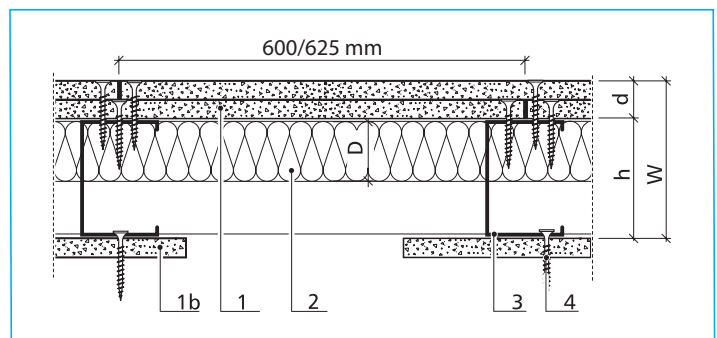
- W Wall thickness (mm)
- d Thickness of the AQUAPANEL® Cement Board Indoor panel
- D/A Thickness of insulation layer (mm)
- h Profile bridge height (mm)
- HS Half width of panel (mm)

### Description of material

- 1 AQUAPANEL® Cement Board Indoor
- 1b AQUAPANEL® Cement Board Indoor panel strips 100 x 100 mm as installation aid
- 2 Insulation material, if desired
- 3 CW-profile
- 4 AQUAPANEL® Maxi Screw
- 5 Approved fixing method
- 6 Insulation strips e.g. sealing tape/partition wall kit
- 7 Glued joint with AQUAPANEL® Joint Adhesive (PU)
- 9 Permanently flexible sealant
- 12 UW-profile



Wall lining, single layer of panelling, horizontal section



EI30 wall lining, double layer of panelling, horizontal section

### Maximum wall height in m for independent wall lining/shaft wall

#### without fire protection requirement

AQUAPANEL® Cement Board Indoor	1 x 12.5 mm		2 x 12.5 mm	
	Installation range 1	Installation range 2	Installation range 1	Installation range 2
1) CW-profile 50/0.6	2.50	2.40	2.60	2.50
2) CW-profile 50/07 with additional fixture at max. distance of 100 cm	3.20	2.75	4.00	3.50
3) CW-profile 75/0.6	3.75	3.30	4.00	3.50
4) CW-profile 100/0.6	4.50	4.10	4.60	4.20

### Physical properties

AQUAPANEL® Cement Board Indoor	Profile	Wall thickness (mm)	Mineral wool (A1 or A2)		Fire resistance class Test certificate	R <sub>w,R</sub> dB
			Thickness (mm)	Gross density (kg/m³)		
2 x 12.5 mm single side	CW 75/0.6	100	-	-	EI30 P-3029/2722TM	-

## Ideal for independent wall linings or shaft walls

### Special notes

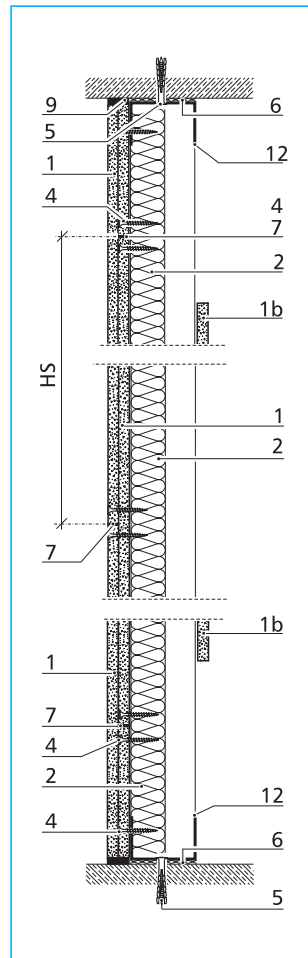
Tiled walls with AQUAPANEL® Cement Board Indoor and in-built alutop-inspection openings are tested for impermeability.

When building the metal framework, follow the standard guidelines supplied by Knauf.

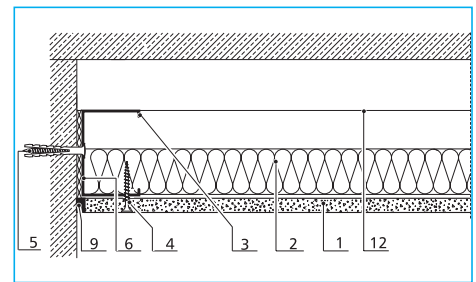
In rooms with continuous high levels of damp or chemical contamination such as commercial kitchens, swimming pools, saunas or chemical laboratories, use profiles with increased corrosion protection.

The stated construction physical characteristics, static and construction properties can only be achieved when exclusive use is made of recommended products.

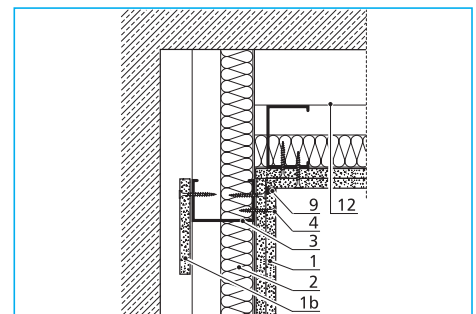
If larger loads ( $\geq 0.4 \text{ kN/m}$ ) need to be fastened to the facings, the C wall profiles spaced at less than 1000 mm must be attached to the solid wall in such a way as to ensure tensile strength, e.g. using angled, galvanized flat steel 4/30 mm.



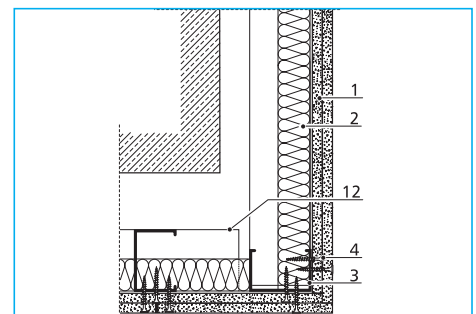
**EI30 wall lining, vertical section**



**Connection to solid walls**



**Formation of an inner corner**



**Formation of an outer corner**

### Material requirements per square metre of wall

Material requirements for independent wall linings, without off-cut and loss

Material	Single layer	Double layer
CW-profile	2.0 lfm	2.0 lfm
UW-profile	0.7 lfm	0.7 lfm
Sealing tape/partition wall kit	0.7 lfm	0.7 lfm
Approved fixing method	1.6 pieces	1.6 pieces
AQUAPANEL® Cement Board Indoor	1 m <sup>2</sup>	2.0 m <sup>2</sup>
AQUAPANEL® Maxi Screws	15 pieces	30 pieces
AQUAPANEL® Joint Adhesive (PU)	50 ml	100 ml
AQUAPANEL® Interior Primer	approx. 50 g	approx. 50 g
Insulation material	1 m <sup>2</sup> if necessary	
Permanently flexible sealant		