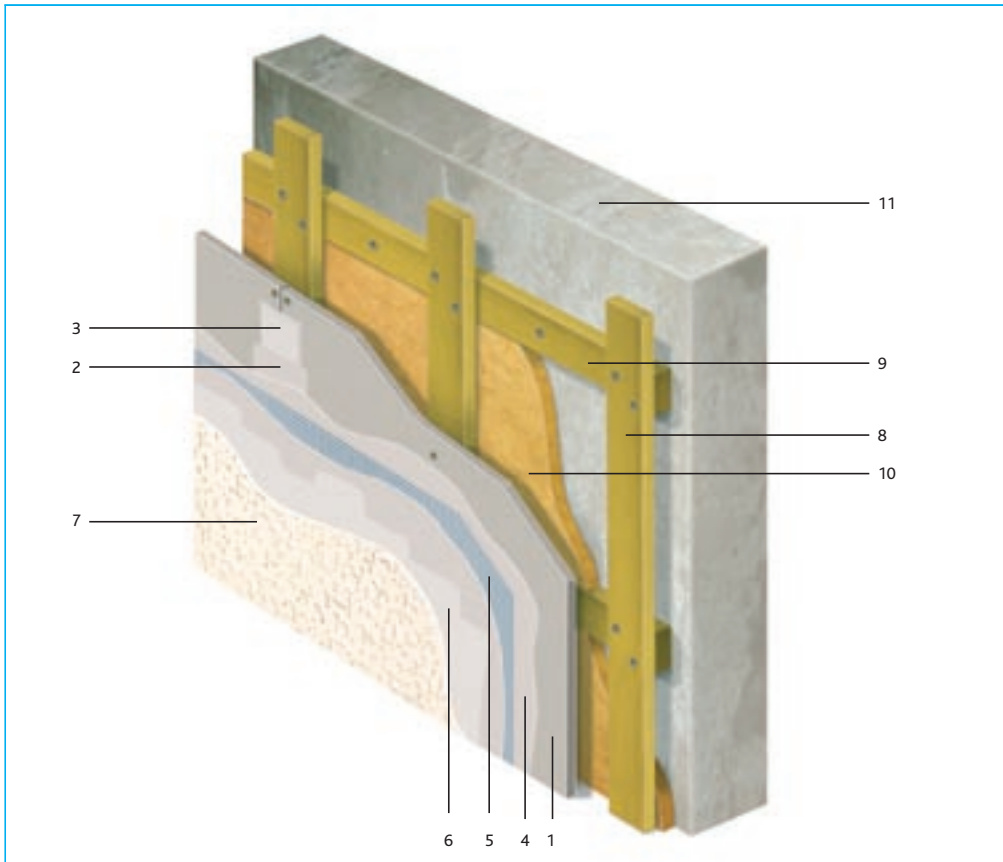


Ventilated system

Installation



Key

- 1 AQUAPANEL® Cement Board Outdoor
- 2 AQUAPANEL® Joint Filler – grey
- 3 AQUAPANEL® Tape (10 cm)
- 4 AQUAPANEL® Exterior Basecoat
- 5 AQUAPANEL® Exterior Reinforcing Mesh
- 6 AQUAPANEL® Exterior Primer
- 7 AQUAPANEL® Exterior Silicon Synthetic Resin Plaster – white or AQUAPANEL® Exterior Dispersion Plaster – white
- 8 Supporting battens
- 9 Basic laths
- 10 Insulation
- 11 Rigid substructure

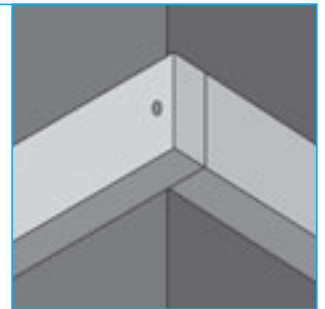
Installation – ventilated system

1. Installation when using battens

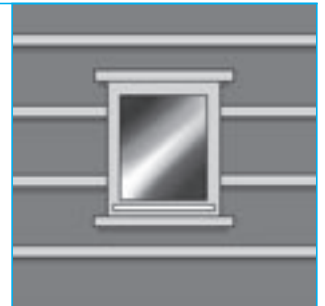
1.1 Anchor the horizontal battens using a sufficient quantity of suitable anchors in the base. The battens should have a minimum cross-section of 24 x 60 mm. To increase the heat insulation of the construction, the space between the battens can be filled with a waterproof heat insulation material.



1.2 In the corners, overlap and screw the base battens.



1.3 Fit battens around openings (e.g. windows) to fix cement boards. Additional battens must always be provided over and under the building work openings.

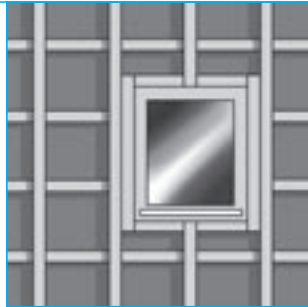


2. Applying the laths

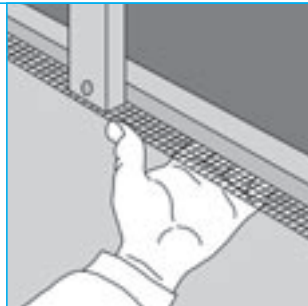
2.1 After anchoring the battens, mount supporting laths at a distance between centres of 600/625 mm. To ensure sufficient edge gaps, in particular at the ends of boards, use pieces of wood with a minimum cross-section 24 x 80 mm.



2.2 Surround the openings with extra laths, in addition to the battens.



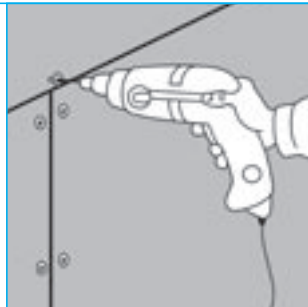
2.3 Attach a ventilation section at the top and bottom of the construction. This is to protect the rear ventilation gap from being entered by pests, insects and small animals.



3. Installing AQUAPANEL® Cement Board Outdoor

Installation with Screws:

3.1 Fasten AQUAPANEL® Cement Board Outdoor to the framework using AQUAPANEL® Maxi Screws. Use AQUAPANEL® Rustproofed Screws to fix the boards to the timber framework, according to local standards. Drive fasteners into the centre of the cement board first, working towards ends and edges. When fastening, ensure that the cement boards rest on the framework.



Screw spacing \leq 250 mm.
Spacing from the edges \geq 15 mm.

Screws should not be overtightened.

Arrangement of boards:

3.2 Attach AQUAPANEL® Cement Board Outdoor panels horizontally with ends over supports. Make sure there is a planned gap of 3-5 mm between the boards. To do this, make a gap between successive horizontal cement boards using a suitable spacer. When fitting subsequent rows of boards, ensure that the vertical joints are offset a minimum of one stud cavity, thus avoiding cross joints.

