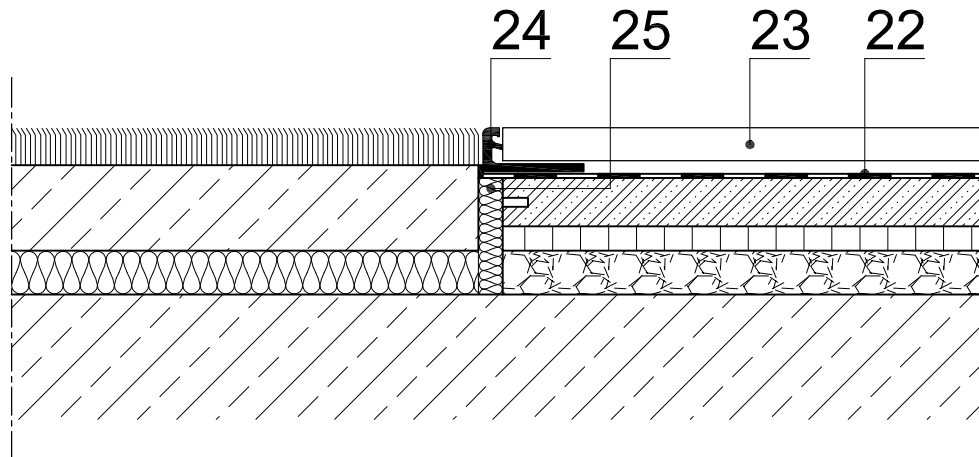


## Key

- Description of the material
- 1 AQUAPANEL® Cement Board Indoor
  - 1a AQUAPANEL® Cement Board Floor
  - 1b AQUAPANEL® Cement Board Floor MF
  - 2 Impact sound insulation board
  - 3 Covering Board e.g. Wood Fibreboard, Gypsum board
  - 4 AQUAPANEL® Levelling Fill
  - 5 AQUAPANEL® Biscuits
  - 6 Barrier
  - 7 Moisture barrier, if required
  - 10 Load-bearing insert
  - 11 Floors made of boards or chipboard
  - 12 Nogging / wooden lath / underlay board >19 mm
  - 13 Stop board
  - 17 Heat-conducting layer or heat-conducting plate
  - 18 Heating pipes
  - 19 Mould plates made of PS or PUR
  - 20 Elastischer, fungizider Fugenfüller
  - 22 Surface sealing
  - 23 Ceramic covering
  - 24 Special section
  - 25 Edge insulation strips
  - 26 Pipe enclosure
  - 27 Pipe collar
  - 29 Electric floor heating
  - 30 Thin bed adhesive

- A Wood boards, d = 21 mm
- B Wood joist 120/180, spacing 62,5 cm
- C Sand filling, d = 50 mm
- D Blind floor, chipboards, d = 19 mm
- E Mineral fibre insulation boards, d = 40 mm
- F Spring tracks, d = 27 mm
- G Knauf gypsum plasterboards, d = 12,5 mm
- H Vibration bracket
- I Wood able laths, 24 x 48 mm
- J Cavity insulation, mineral fibre, 100 mm



Drawing: F 22  
scale: 1/ 2,5

Details in wet rooms  
Transition at the same height

version: 04/2008

Knauf Aquapanel GmbH & Co. KG

Zur Helle 11  
58638 Iserlohn  
Deutschland  
aquapanel.info@knauf.com

**KNAUF**