



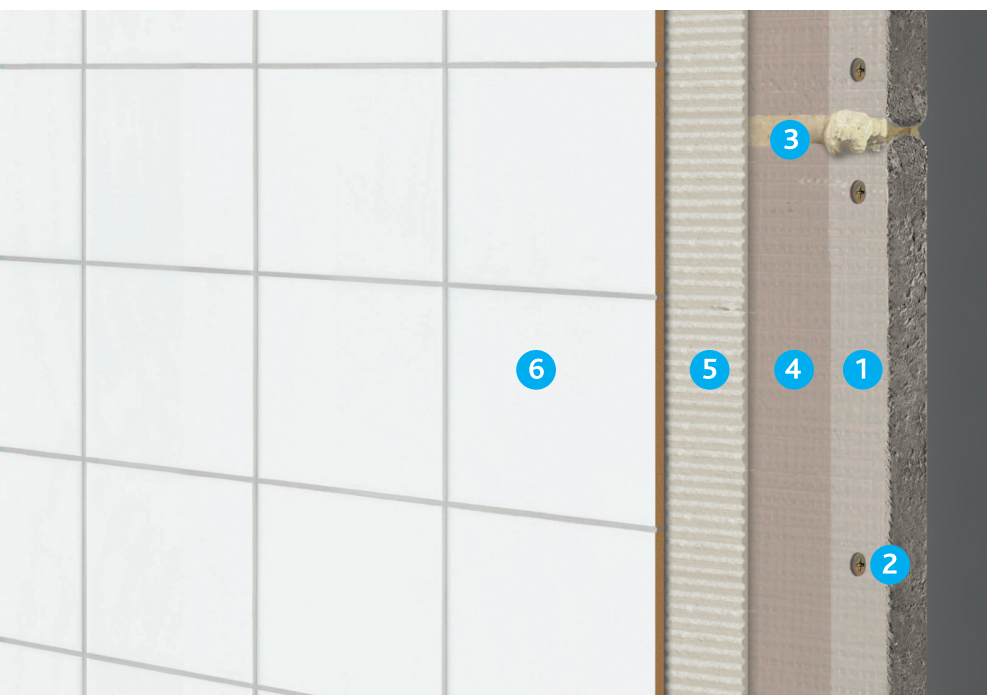
# Ready keyed for tiling with **AQUAPANEL® Cement Board Indoor**

TECHNICAL LEAFLET

Be certain,  
choose **AQUAPANEL®**

**AQUAPANEL®**

# Ready keyed for tiling with AQUAPANEL® Cement Board Indoor



1. AQUAPANEL® Cement Board Indoor
2. AQUAPANEL® Maxi Screw
3. AQUAPANEL® Joint Adhesive (PU)
4. AQUAPANEL® Board Primer
5. Knauf Tile Adhesive
6. Ceramic tiles

## TILES & BRICK SLIPS

As a standard it is possible to apply tiles – without taking further measures – with a max. weight up to **50 kg/m²** in the interiors and a tile size up to **600 mm x 600 mm**.

Set studs at maximum **625 (600)** mm for horizontal and vertical installation of the boards.

For ceramic tile coverings, (tile dimensions ≤ 600 mm x 600 mm), use a flexible adhesive when placing tiles. The tile adhesive must – as a minimum – meet the requirements of class C2 according to EN 12004.

AQUAPANEL® Cement Board Indoor is appropriate for tiling but if the tile size is bigger we recommend using an additional decoupling system (e.g. Mapei, PCI or Schlüter).

**Note:** Where single-layer panels are required in tiling applications, AQUAPANEL® Cement Board Indoor is the best tile backing board!

### Generally, we recommend the following for the use of larger and heavier tiles with a weight of up to 120 kg/m²

- To carry the additional load, use metal CW-studs 75/50/0.6. For timber stud partitions use stud sizes min. 72 mm x 48 mm. Reduce the stud spacing to max. 400 mm. The maximum wall height should not exceed 3.00 m. Furthermore, the tiles should not only be glued to the board but also stand directly on the floor or on a loadbearing support.
- For larger tiles use suitable decoupling systems to decouple the tile from the substrate.
- Select suitable adhesives according to manufacturer's recommendations for cement bases (as a minimum meet the requirements of class C2 according to EN 12004).
- Dependent on wall heights, requirements for fire, sound or thermal performance of the wall it could be reasonable to work with a double layer AQUAPANEL® Cement Board.

#### AQUAPANEL® Cement Board Indoor (according DIN EN-12467)

Max. weight in kg/m²	Max. stud spacing in mm	Max. tile sizes in mm	Wall height in m	Placement
50	600/625	≤ 600 x 600 <sup>1)</sup>	according standard recommendation	Directly on the wall without a load-bearing support
120	400	≤ 600 x 600	3	Directly on the floor or on a load-bearing support

<sup>1)</sup> For larger tiles use a decoupling system