

# WL132C.1 AQUAPANEL® Rear-ventilated rainscreen facade with Insulation

## WL132C.1-V3.1 - Vertical section - connection to parapet

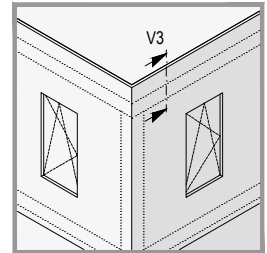


Details scale 1:5

- 1) according to static calculation
- 2) observe edge clearance!

Note:

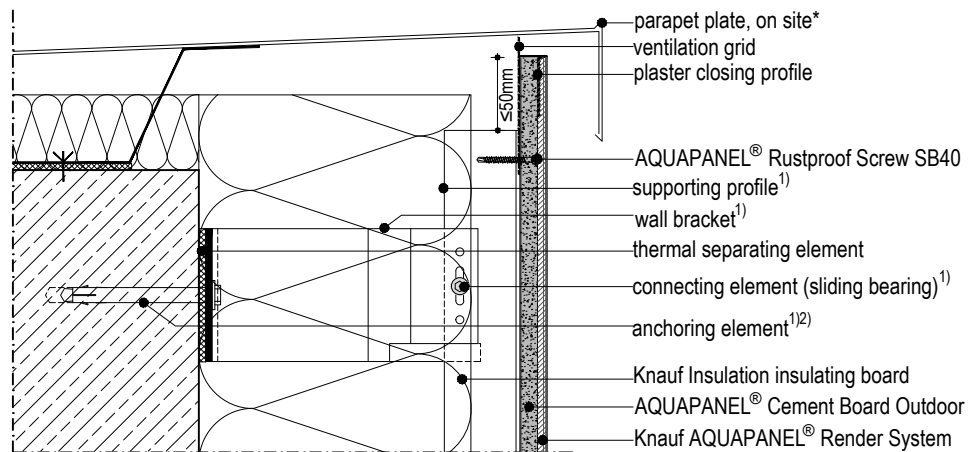
- The drawings illustrating the general concept of how the system works and interfaces with other construction components.
- The drawings do not substitute an execution design.
- Observe the static calculation, general guidelines and edge clearance.
- The technical specifications and information on the products given in the technical data sheets and system descriptions/ approvals must be observed.



WL132C.1-V3.1

Vertical section - connection to parapet

attic according national guidelines



\* observe national guidelines