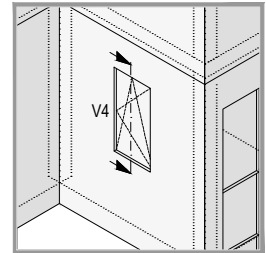


Details scale 1:5

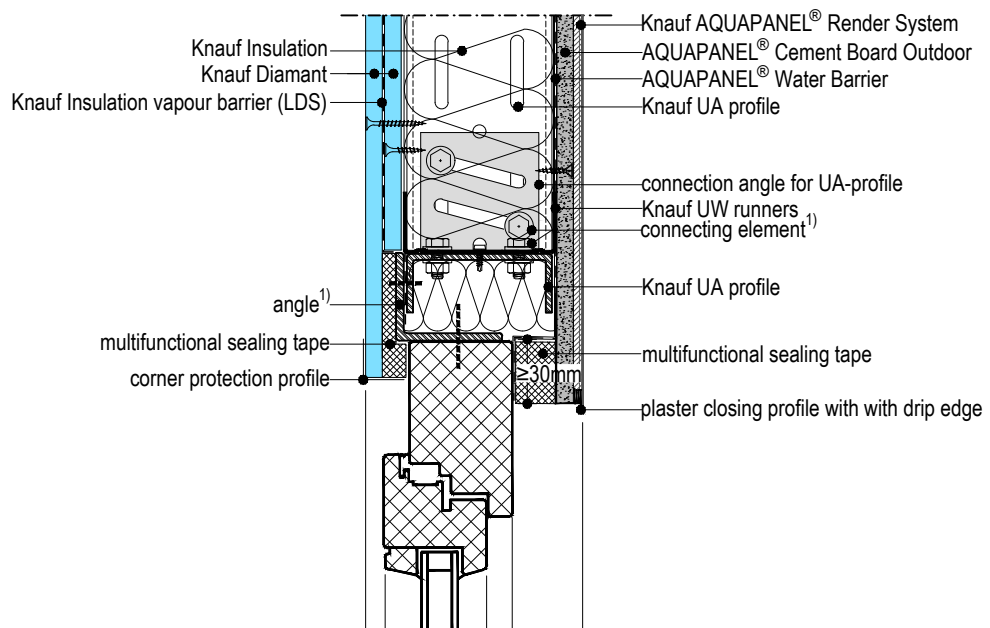
1) according to static calculation
 2) observe edge clearance!

Note:

- The drawings illustrating the general concept of how the system works and interfaces with other construction components.
- The drawings do not substitute an execution design.
- Observe the static calculation, general guidelines and edge clearance.
- The technical specifications and information on the products given in the technical data sheets and system descriptions/ approvals must be observed.



WM111C.1-V4.1.1 Vertical section - lintel



WM111C.1-V4.1.2 Vertical section - parapet

