

WM111C.2 AQUAPANEL® Single Stud with ETICS

WM111C.2-V1.1/H1.1 - Main sections, horizontal and vertical

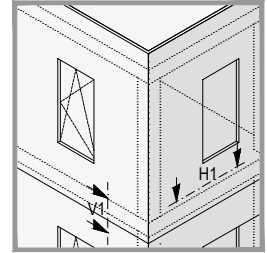


Details scale 1:5

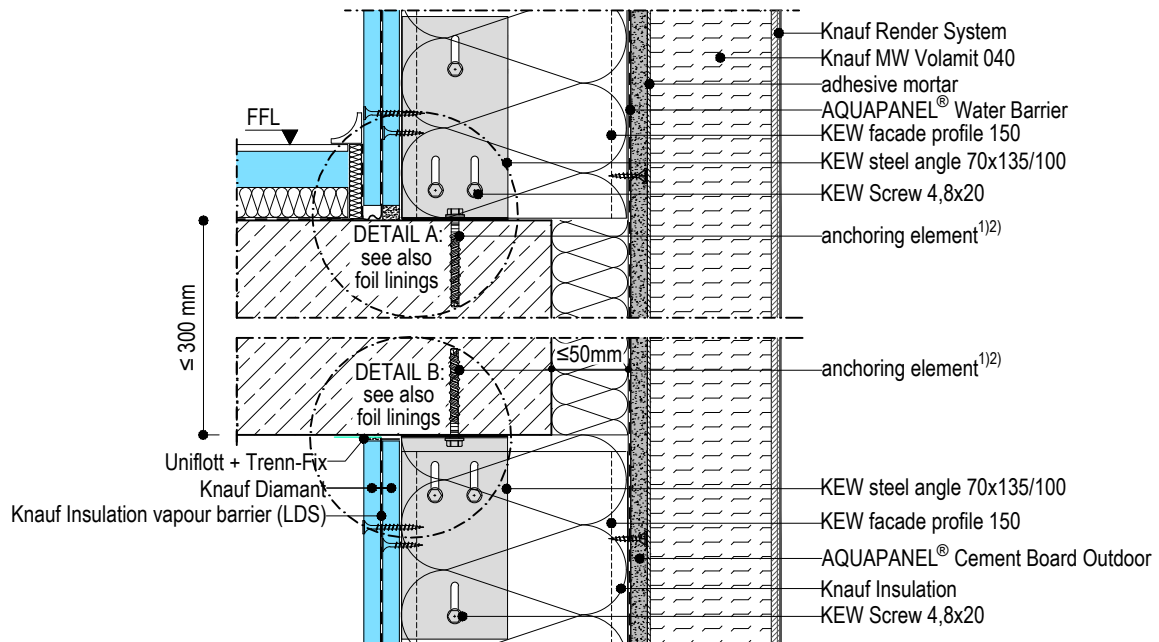
1) according to static calculation
2) observe edge clearance!

Note:

- The drawings illustrating the general concept of how the system works and interfaces with other construction components.
- The drawings do not substitute an execution design.
- Observe the static calculation, general guidelines and edge clearance.
- The technical specifications and information on the products given in the technical data sheets and system descriptions/ approvals must be observed.



WM111C.2-V1.1 Vertical section - connection to end plate



WM111C.2-H1.1 Horizontal section - board joint

