

# WM111C.2 AQUAPANEL® Single Stud with ETICS

## WM111C.2-V2.1 - Vertical section - connection to base

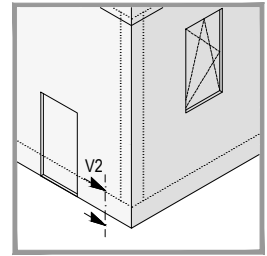


Details scale 1:5

- 1) according to static calculation
- 2) observe edge clearance!

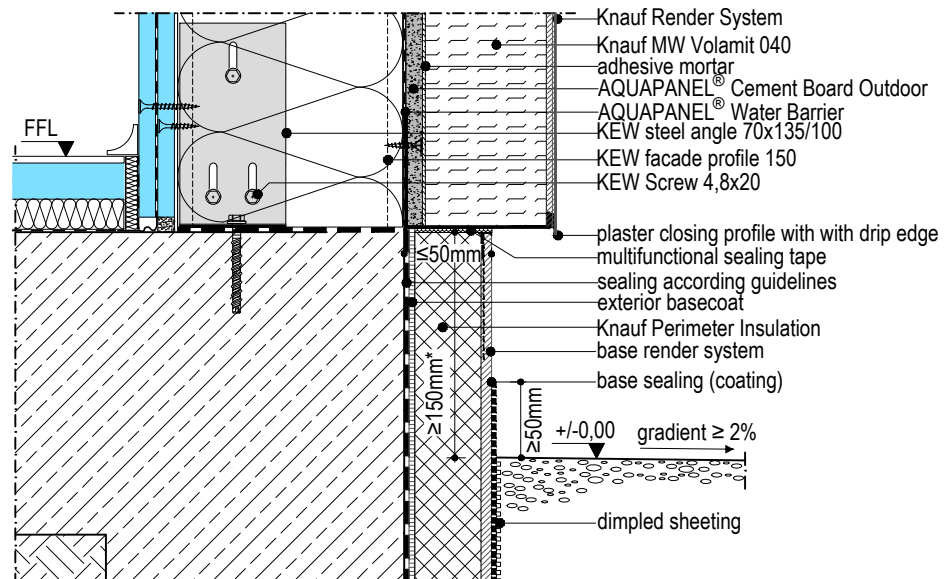
Note:

- The drawings illustrating the general concept of how the system works and interfaces with other construction components.
- The drawings do not substitute an execution design.
- Observe the static calculation, general guidelines and edge clearance.
- The technical specifications and information on the products given in the technical data sheets and system descriptions/ approvals must be observed.



WM111C.2-V2.1

Vertical section - connection to base



\*observe the national guidelines!