

WM411C.1 AQUAPANEL® Double Stud with intermediate Board

WM411C.1-V1.1/H1.1 - Main sections, horizontal and vertical

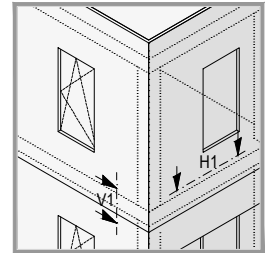


Details scale 1:5

1) according to static calculation
2) observe edge clearance!

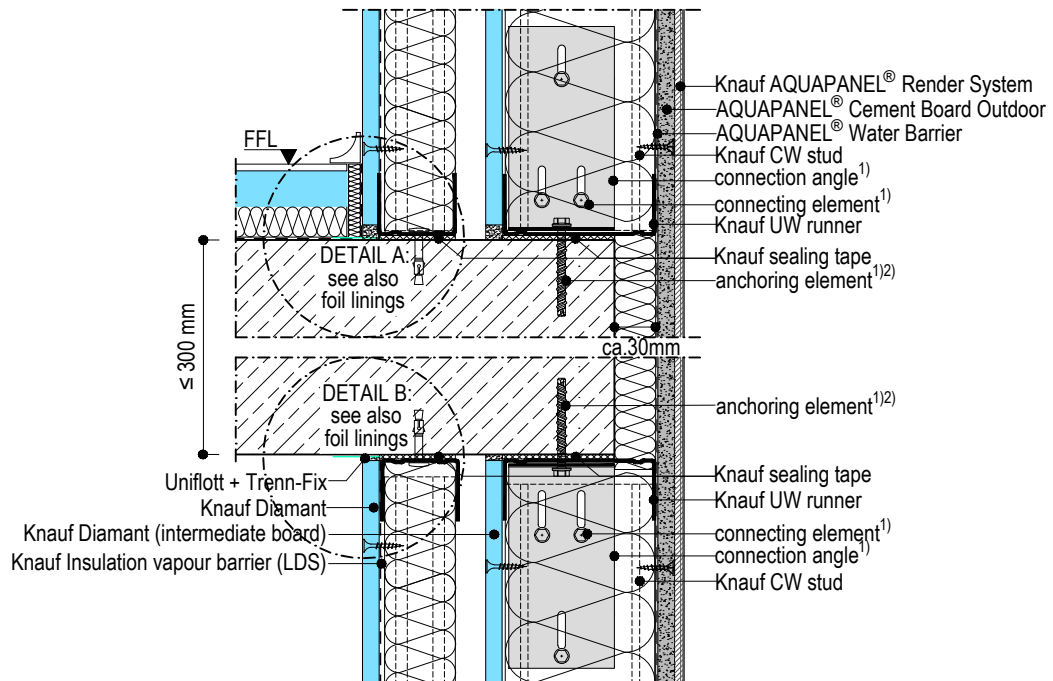
Note:

- The drawings illustrating the general concept of how the system works and interfaces with other construction components.
- The drawings do not substitute an execution design.
- Observe the static calculation, general guidelines and edge clearance.
- The technical specifications and information on the products given in the technical data sheets and system descriptions/ approvals must be observed.



WM411C.1-V1.1

Vertical section - connection to end plate



WM411C.1-H1.1

Horizontal section - board joint

