

WM411C.2 AQUAPANEL® Double Stud with intermediate Board

WM411C.2-V4.1.1-4.1.2 - Window exterior stud with nested CW-profiles

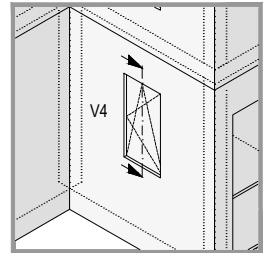


Details scale 1:5

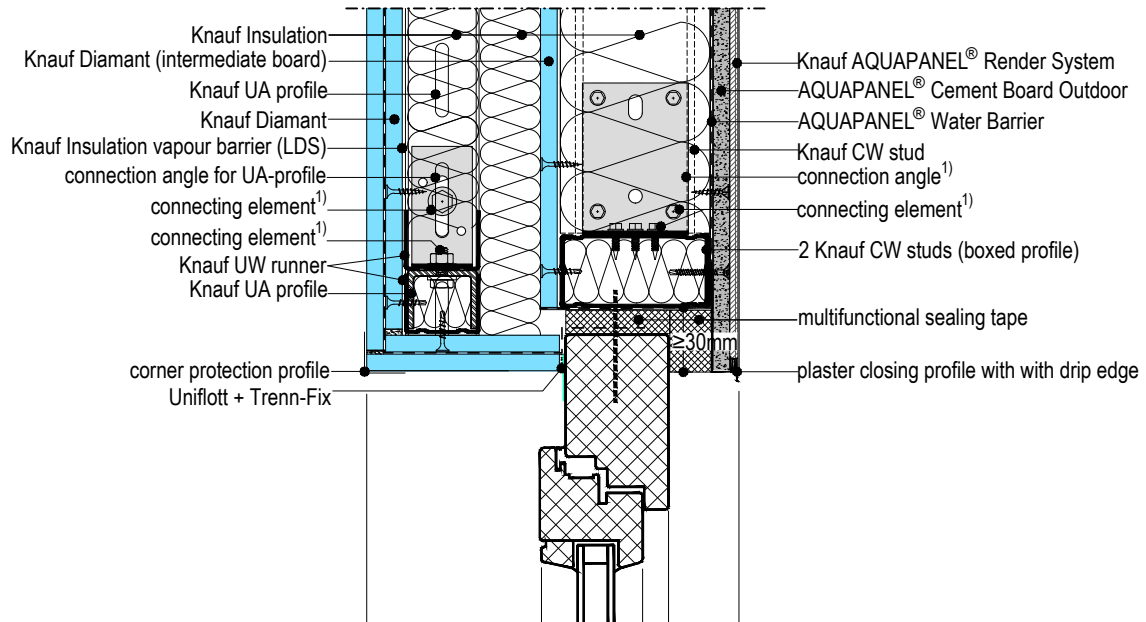
- 1) according to static calculation
- 2) observe edge clearance!

Note:

- The drawings illustrating the general concept of how the system works and interfaces with other construction components.
- The drawings do not substitute an execution design.
- Observe the static calculation, general guidelines and edge clearance.
- The technical specifications and information on the products given in the technical data sheets and system descriptions/ approvals must be observed.



WM411C.2-V4.1.1 Vertical section - lintel



WM411C.2-V4.1.2 Vertical section - parapet

