

Key

Description of the material

- 1 AQUAPANEL Cement Board Indoor
- 1a AQUAPANEL Cement Board Indoor strips in profile widths
- 2 Insulation material
- 2a Insulation strips
- 3 CW-profile
- 3a batten-/lathis framework
- 4 AQUAPANEL Maxi Screw
- 4a Schnellbauschraube 3,5 x 25 mm
- 5 Approved fixing method
- 6 Insulating strips e.g. sealing tape/partition wall kit
- 6.a Edge insulation strips
- 6.b Felt strips
- 7 Glued joint with AQUAPANEL Joint Adhesive (PU)
- 8. Woodscrews 6 x 100 mm
- 9. Permanently flexible sealant
- 9.a Sealing tape
- 12 UW-profile
- 12 a L wall interior corner, profile
- 14a Knauer fire protection plate GKF, 12,5 mm
- 15 Sealing e.g. surface sealing tape inserted at surface thickness
- 16 Flexible adhesive
- 17 Ceramic tiles or stoneware
- 20 C-ceiling profile EN 13964
- 21 Nonius hanger with safety clips or direct ceiling hanger
- 22 Cross connector
- 23 Angle profile
- 24 U-Section profile e.g. UD-Profile 28/27
- 25 Sealing ring
- 26 Hollow wall installation kit
- 27 Dividing strips
- 28 Filling
- 29 Expansion joint profile
- 30 Mounting plate

Abbreviations

- W Wall thickness (mm)
- d Thickness of the AQUAPANEL Cement Board Indoor panel
- D/A Thickness of insulation layer (mm)
- h Profile bridge height (mm)
- HS Half width of panel (mm)

- a Distance (mm) of direct hanger
- b Distance (mm) of the batten framework
- c Distance (mm) of the lath framework

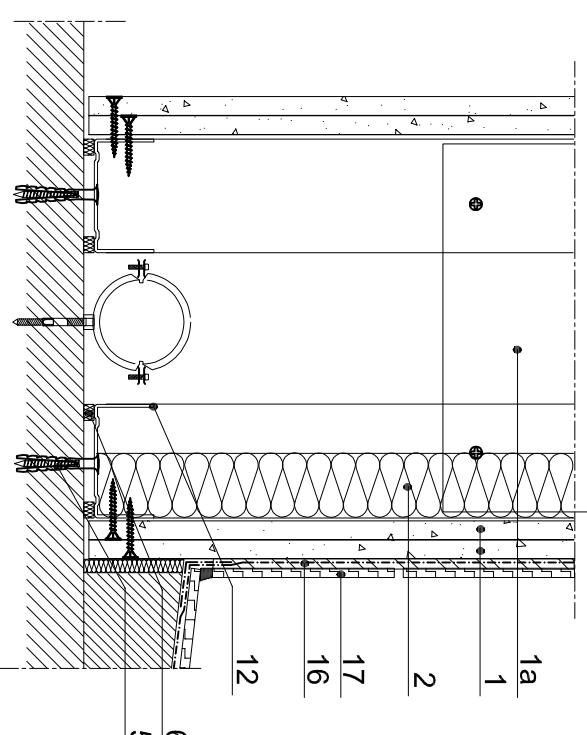
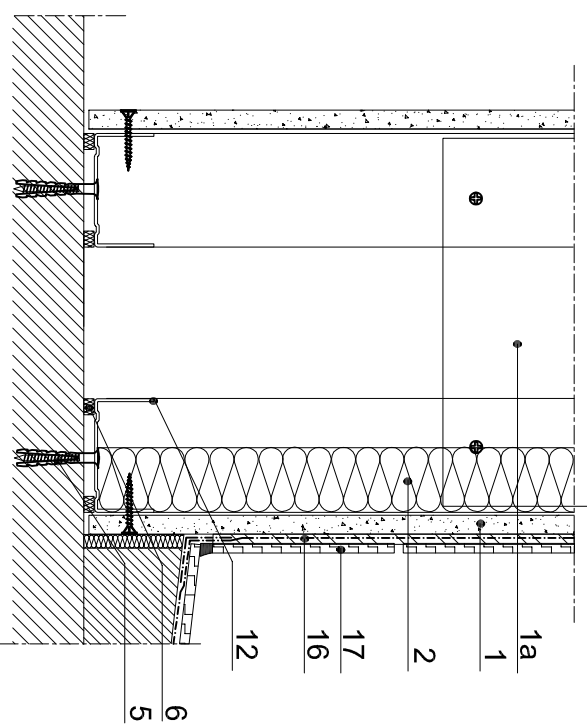
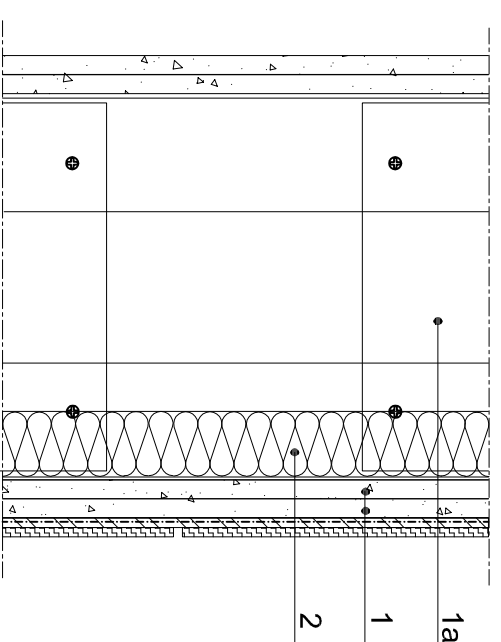
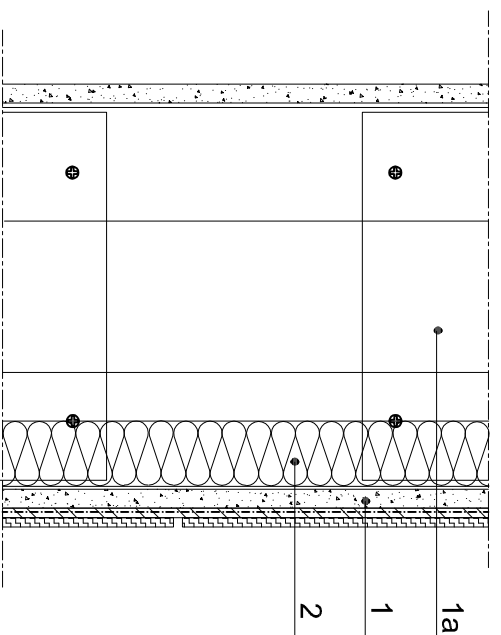
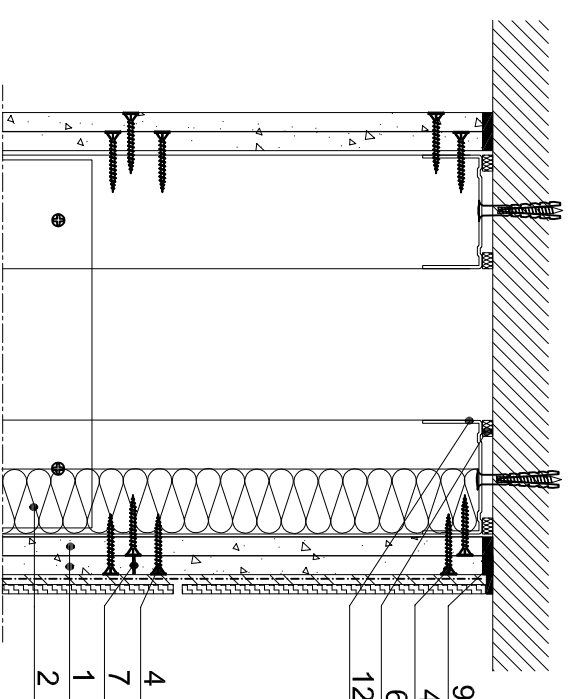
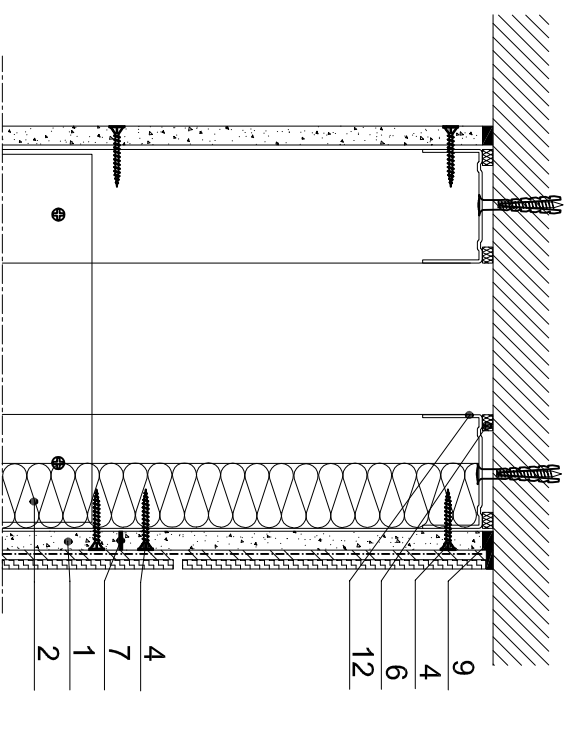
Drawing: 13
scale: 1/5

vertical cross-section

Partition wall with metal double stud frame

version: 09/2007

Knauf Aquapanel GmbH & Co. KG
Zur Helle 11
58638 Iserlohn
Deutschland
aquapanel.info@knauf.com



single layer

double layer