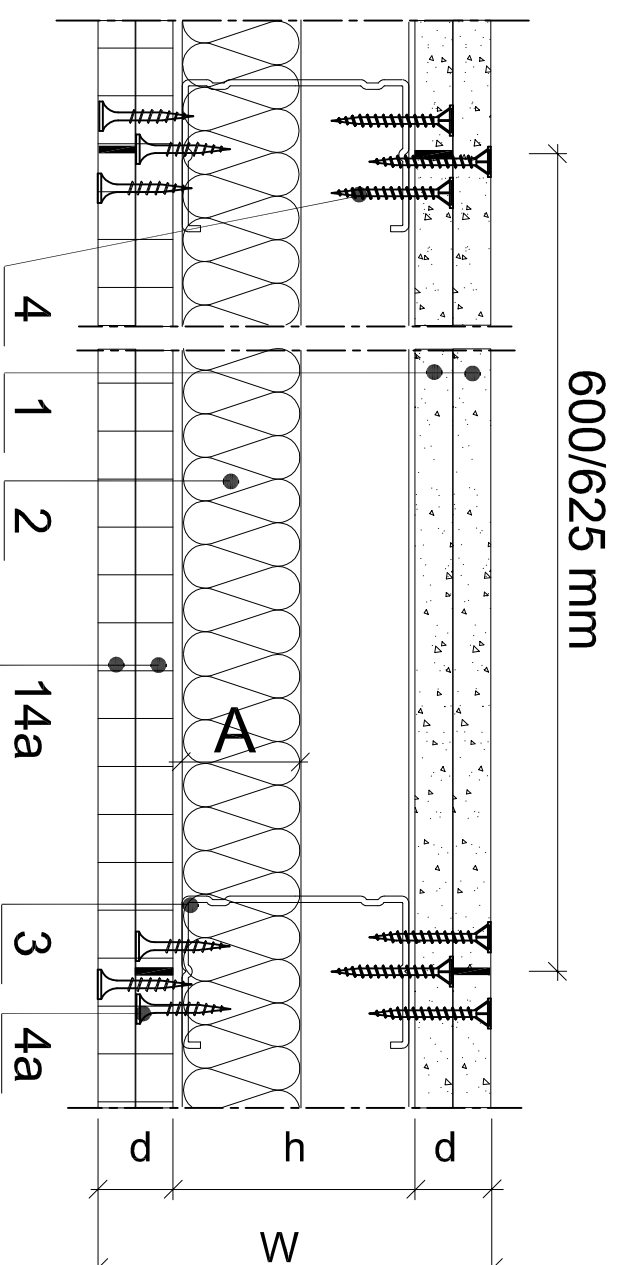


## Key



- Description of the material
- 1 AQUAPANEL Cement Board Indoor
  - 1b AQUAPANEL Cement Board Indoor strips in profile widths
  - 2 Insulation material
  - 2a Insulation strips
  - 3 CW-profile
  - 3a batten-/lath framework
  - 4 AQUAPANEL Maxi Screw
  - 4a Schnellbauschraube 3,5 x 25 mm
  - 5 Approved fixing method
  - 6 Insulating strips e.g. sealing tape/partition wall kit
  - 6.a Edge insulation strips
  - 6.b Felt strips
  - 7 Glued joint with AQUAPANEL Joint Adhesive ( PU )
  - 8. Woodscrews 6 x 100 mm
  - 9. Permanently flexible sealant
  - 9.a Sealing tape
  - 12 UW-profile
  - 12.a L wall interior corner, profile
  - 14a Knaut fire protection plate GKF, 12,5 mm
  - 15 Sealing e.g. surface sealing tape inserted at surface thickness
  - 16 Flexible adhesive
  - 17 Ceramic tiles or stoneware
  - 20 C-ceiling profile EN 13964
  - 21 Nonius hanger with safety clips or direct ceiling hanger
  - 22 Cross connector
  - 23 Angle profile
  - 24 U-Section profile e.g. UD-Profile 28/27
  - 25 Sealing ring
  - 26 Hollow wall installation kit
  - 27 Dividing strips
  - 28 Filling
  - 29 Expansion joint profile
  - 30 Mounting plate
- Abbreviations
- w Wall thickness (mm)
  - d Thickness of the AQUAPANEL Cement Board Indoor panel
  - D/A Thickness of insulation layer (mm)
  - h Profile bridge height (mm)
  - HS Half width of panel (mm)
  - a Distance (mm) of direct hanger
  - b Distance (mm) of the batten framework
  - c Distance (mm) of the lath framework

Drawing: I 5 - 5.2  
scale: 1/ 2.5

Mixed construction EI90

1x12.5 mm AQUAPANEL  
Cement Board Indoor +  
1x12.5 mm GKF both sides

version: 09/2007

**Knauf Aquapanel GmbH & Co. KG**  
Zur Helle 11  
58638 Iserlohn  
Deutschland  
aquapanel.info@knauf.com